

PRESSURE ADJUSTING VALVES



DIPLOMATIC

TECHNICAL INFORMATION **IT. 238**

ISSUE 1/90

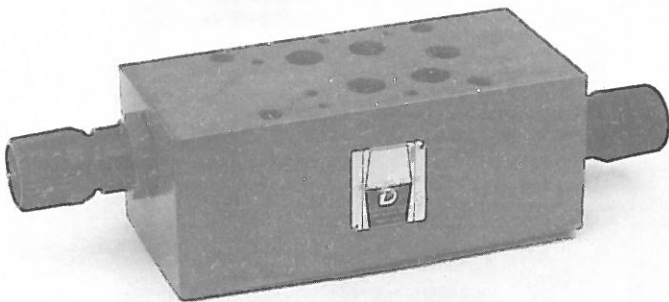
Type **RM07M*D** pressure adjustment on A and B ways

RM07M*Sa pressure adjustment on A way

RM07M*Sb pressure adjustment on B way

for modular assembling under DN 16 distributors

connection CETOP 4.2-4-07-320



SPECIFICATIONS

Nominal size	16 DN
A-B-P-T transit flow	250 l/min
nominal flow controlled by the peak limiter (A to B and viceversa)	40 l/min
Maximum flow controlled by the peak limiter (A to B and viceversa)	80 l/min
Maximum pressure on P-T-A-B-X lines	320 bar
Maximum pressure on Y line	105 bar
Pressure adjusting ranges of the peak limiters	3 = 5 ÷ 70 bar
	4 = 35 ÷ 140 bar
	5 = 100 ÷ 250 bar
	6 = 100 ÷ 320 bar
Suggested filtering degree	25 micron
Working temperature	-15 + 70 °C

2

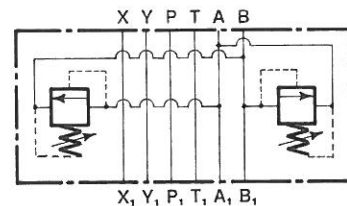
The main function of these valves consists of reducing pressure peaks arising between the **A** and **B** chambers of an hydraulic circuit whenever the actuator abruptly modifies its status or reverses the motion direction.

They are very sensitive that is characterized by a rapid intervention time thus limiting the possible consequences of the dangerous water hammerings.

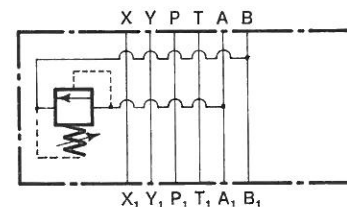
They are designed for modular assembling under **E07** type (IT. 417) piloted distributors by means of extended screws or suitable rods. All types are available with four different adjusting ranges from 5 up to 320 bar and permit the limitation of the pressure on **A** and **B** crossed chambers thus allowing the flux to pass from **A** chamber to **B** one and vice-versa independently and with an adjustable Δp .

The **RM07M*D** type is provided with double adjustment on **A** and **B** ways while the **RM07M*Sa** and **RM07M*Sb** types are provided with simple adjustment respectively on **A** and **B** with discharge into the opposite chamber.

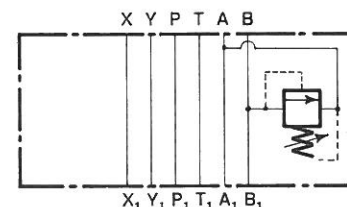
The valves are normally delivered with adjustment by hexagonal head screw. Upon request they can be equipped with SICBLOC adjusting knob with automatic locking and visualization of the pre-set pressure value.



RM07M*D

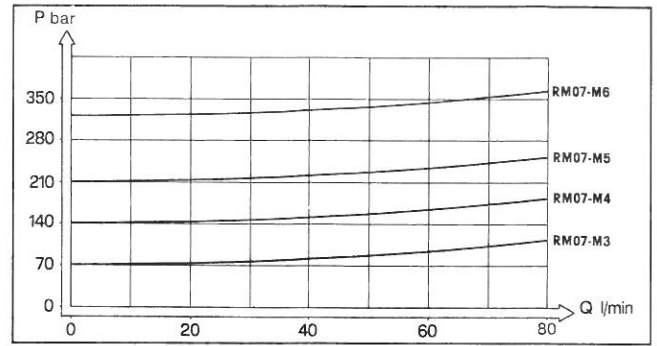


RM07M*Sa

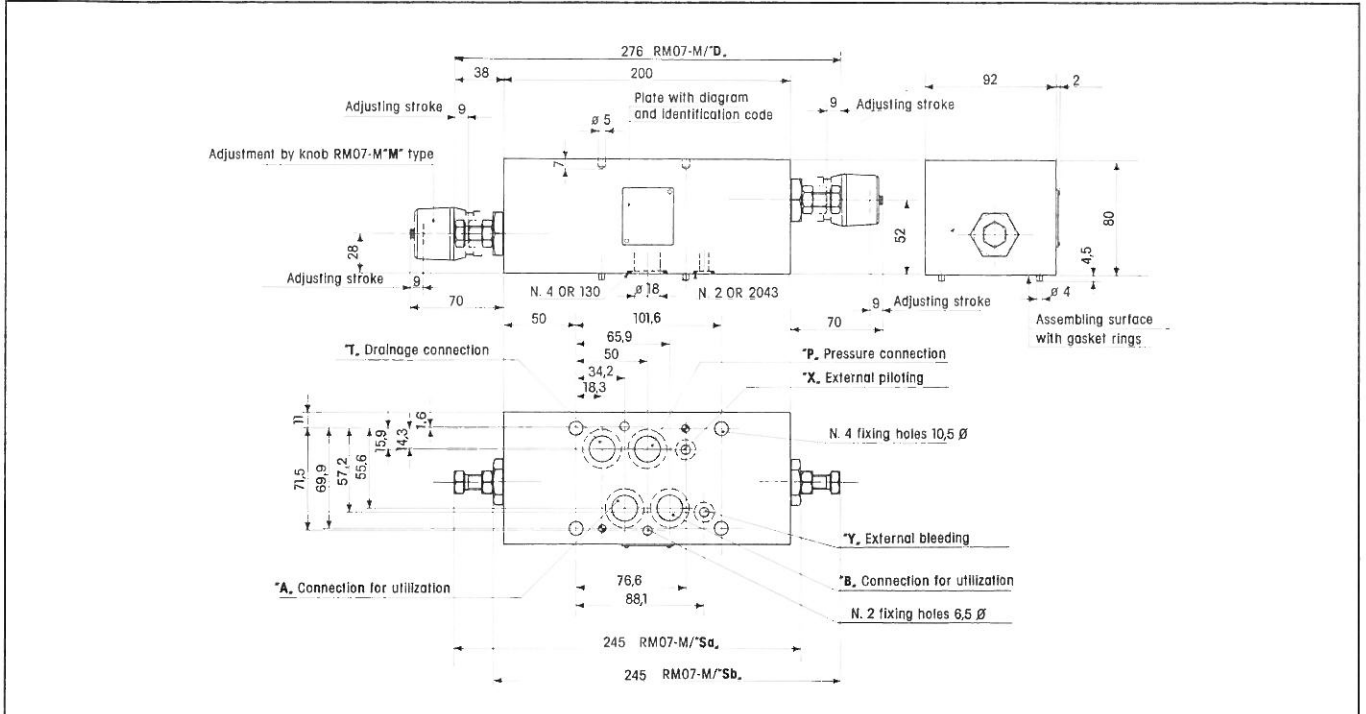


RM07M*Sb

The diagram shows the curve of the pressure referred to the various transit flows to the peak limiters with maximum rating.



OVERALL DIMENSIONS



IDENTIFICATION CODE OF THE VALVE

RM 07 M * * - * * 10 / *

Maximum pressure adjusting valve

Nominal size 07 = DN 16

Modular connection CETOP 4.2-4-07-320

Pressure rating range on A or B line for valves with simple adjusting type RM07M*S*

3 = 5 ÷ 70 bar 5 = 100 ÷ 250 bar
4 = 35 ÷ 140 bar 6 = 100 ÷ 320 bar

Pressure rating range for B line for valves with double adjusting type RM07M*D:

3 = 5 ÷ 70 bar 5 = 100 ÷ 250 bar
4 = 35 ÷ 140 bar 6 = 100 ÷ 320 bar

(omit when the rating range corresponds to the one of the A line)

Special gaskets
V = Viton gaskets
(omit if not requested)

Serial number (from 10 to 19 overall dimensions are unchanged)

M = Adjusting knob
(omit for valves with adjustment by hexagonal head screw)

Adjusting positions

Sa = simple on A line with drainage in B
Sb = simple on B line with drainage in A

D = double on A and B line with crossed drainage



DIPLOMATIC

Registered Office and Corporate Headquarters:
21052 BUSTO ARSIZIO
Via Alba 18 - POB 341

Administration, Offices and Works:
20025 LEGNANO - P.le Bozzi 1
Tel. (0331) 472111
Tlx 330604 DPLCOM I
Fax (0331) 548328

TECHNICAL AND COMMERCIAL SERVICE CENTERS IN ITALY

DIPLOMATIC ASSISTENZA TECNICA s.r.l. - 21052 BUSTO ARSIZIO
Via Alba, 18 - Tel. (0331) 637895

40133 BOLOGNA - Via Pasubio, 63 - Tel. (051) 387840 - 310988 - Fax (051) 387840
25100 BRESCIA - Via G. Marconi, 29 - Tel. (030) 390811 - 300621 - Fax (030) 300621
21052 BUSTO ARSIZIO - Via Alba, 18 - Tel. (0331) 635505 - 634144
35100 PADOVA - Via A. Da Bassano, 45 - Tel. (049) 606699 - Fax (049) 606889
10148 TORINO - Via Reiss Romoli, 122/4 - Tel. (011) 2202511 - 2202512
Fax (011) 2204275

ABROAD

E **DIPLOMATIC IBERICA S.A.** - USURBIL (Guipúzcoa) - San Sebastian - Apartado 1336 - Tel. 362646/7 - Tlx 36277 DUMAC E - Fax (943) 361135
F **DIPLOMATIC AUTOMATION FRANCE sarl** - 94250 GENTILLY (Val de Marne) 43, Avenue Pasteur - Tel. 49660101 - Tlx 204968F DIPLOMA - Fax (1) 45472681
U.K. **DIPLOMATIC U.K. LTD.** - RUGBY CV 21 1PB - Warwickshire, Consul Road - Trib. Indstr. Estate - Tel. Rugby 0788/70411 - Tlx 311236 DUPLO G - Fax (788) 67632