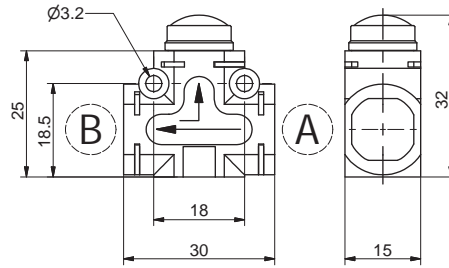




Quick exhaust valve



Ordering code

551.161.A.B.XX

A Connection A
see CONNECTIONS LIST

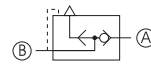
B Connection B
see CONNECTIONS LIST

CONNECTIONS LIST

- 00 = None
- D4 = Straight Ø4
- D6 = Straight Ø6
- D8 = Straight Ø8
- L1 = Female banjo G1/8"
- G4 = Rotating banjo Ø 4
- G6 = Rotating banjo Ø 6
- G8 = Rotating banjo Ø 8
- M1 = G1/8 male
- M2 = G1/4 male
- F1 = G1/8 female

NOTE : For the dimension including cartridges see page CONNECTIONS
Example: 551.161.D8.D8.XX
Quick exhaust valve, CONNECTIONS "A" and "B" Tube Ø8

Pneumatic Symbol



Construction characteristics

- These are 3 ways, two positions valves which can be directly mounted onto the actuator or between the actuator and the control valve. Their function is to discharge the air directly into the atmosphere without going through the pneumatic circuit enabling the actuator to reach the maximum speed.
- Mounting options:
 - on DIN rail using the relevant adaptor kit (see accessories)
 - with 90° bracket (see accessories)
- directly on the support plate thanks to two through holes on the body

Technical characteristics

Fluid	Filtered and lubricated air or not
Connections	See CONNECTIONS LIST
Max. working pressure	10 bar
Working temperature	-5°C ÷ +50°C
Weight without connections	15 gr.
Flow rate at 6 bar with $\Delta p=1$ (from 1 to 2)	250 NI/min
Flow rate at 6 bar with free exhaust (from 2 to 3)	500 NI/min

