

1

Pneumatic-Spring

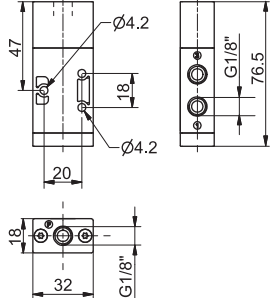
3/2

Ordering code

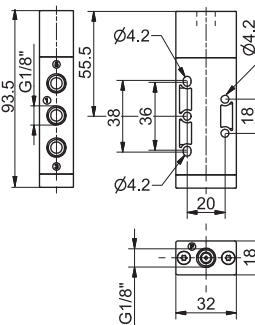
T228.11.1

5/2

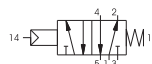
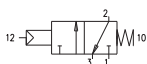
Pneumatic-Spring



TYPE	32 = 3 ways 52 = 5 ways
------	----------------------------



Weight gr. 65
Minimum operating pressure 2,5 bar



Weight gr. 78
Minimum operating pressure 2,5 bar

Operational characteristics	Fluid	Max working pressure	Operating Temperature		Flow rate at 6 bar with $\Delta p=1$	Orifice size	Working ports size	Pilot ports size
	Filtered air, with or without lubri-	10 bar	Min. -5°C	Max. +50°C	620 NI/min	mm 6	G 1/8"	G 1/8"

Pneumatic-Differential (external)

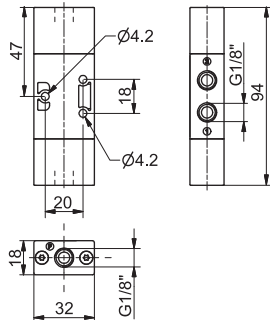
3/2

Ordering code

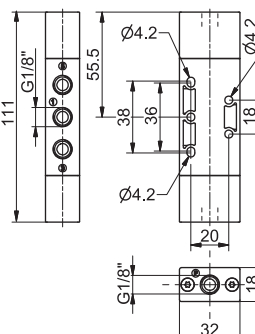
T228.11.12

5/2

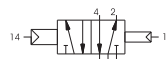
Pneumatic-Differential (external)



TYPE	32 = 3 ways 52 = 5 ways
------	----------------------------



Weight gr. 74
Minimum operating pressure 2,5 bar



Weight gr. 86
Minimum operating pressure 2,5 bar

Operational characteristics	Fluid	Max working pressure	Operating Temperature		Flow rate at 6 bar with $\Delta p=1$	Orifice size	Working ports size	Pilot ports size
	Filtered air, with or without lubri-	10 bar	Min. -5°C	Max. +50°C	620 NI/min	mm 6	G 1/8"	G 1/8"

Pneumatic-Differential self-feeding

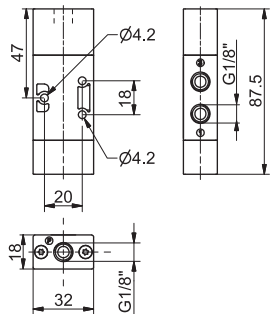
3/2

Ordering code

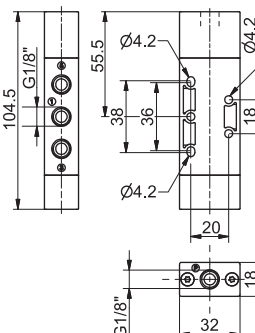
T228.11.12/1

5/2

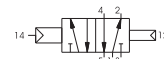
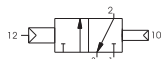
Pneumatic-Differential self-feeding



TYPE	32 = 3 ways 52 = 5 ways
------	----------------------------



Weight gr. 70
Minimum operating pressure 2,5 bar



Weight gr. 82
Minimum operating pressure 2,5 bar

Operational characteristics	Fluid	Max working pressure	Operating Temperature		Flow rate at 6 bar with $\Delta p=1$	Orifice size	Working ports size	Pilot ports size
	Filtered air, with or without lubri-	10 bar	Min. -5°C	Max. +50°C	620 NI/min	mm 6	G 1/8"	G 1/8"



1

Pneumatic-Pneumatic	3/2	Ordering code T228.1.11.11	5/2	Pneumatic-Pneumatic	
		<p>TYPE</p> <p>1 32 = 3 ways</p> <p>52 = 5 ways</p>			
<p>Weight gr. 77</p> <p>Minimum operating pressure 2 bar</p>				<p>Weight gr. 90</p> <p>Minimum operating pressure 2 bar</p>	

Operational characteristics	Fluid	Max working pressure	Operating Temperature		Flow rate at 6 bar with Δp=1	Orifice size	Working ports size	Pilot ports size
	Filtered air, with or without lubri-		10 bar	Min. -5°C				

Pneumatic-Pneumatic 3 positions				5/3
<p>Ordering code</p> <p>T228.53.F.11.11</p> <p>FUNCTION</p> <p>F 32 = Open Centres</p> <p>33 = Pressured Centres</p>				
<p>Weight gr. 110</p> <p>Minimum operating pressure 3 bar</p>				

Operational characteristics	Fluid	Max working pressure	Operating Temperature		Flow rate at 6 bar with Δp=1	Orifice size	Working ports size	Pilot ports size
	Filtered air, with or without lubri-		10 bar	Min. -5°C				